



Huapango del Oso

Commissioned by the Beckendorff Symphony Orchestra, Katy, Texas
Matthew Porter and Susan Steber, conductors
In commemoration of their performance at the 65th Midwest Clinic

Gabriel Musella
ASCAP

Sheet music for Double Bass, titled "Huapango del Oso". The music is written in bass clef, 3/4 time, and B-flat major. It consists of six systems of music, each labeled with a letter in a box (A through F).

System 1 (Measures 1-8): Starts with a forte (*f*) dynamic. Measures 1-4 contain fingerings -1, -2, and 0. Measure 5 contains a pizzicato (*pizz.*) instruction and a fingerings -1. Measure 6 is marked mezzo-forte (*mf*). Measure 7 is marked with a box containing the letter **A**. Measure 8 ends with a mezzo-forte (*mf*) dynamic.

System 2 (Measures 9-15): Measure 9 is marked with a box containing the letter **B**. Measure 10 contains a fingerings -4. Measure 11 contains a fingerings 1. Measure 12 contains a fingerings 0. Measure 13 is marked with a box containing the letter **B**. Measure 14 is marked with a box containing the letter **B**. Measure 15 is marked with a box containing the letter **B**.

System 3 (Measures 16-23): Measure 16 is marked with a box containing the letter **C**. Measure 17 is marked with a box containing the letter **C**. Measure 18 is marked with a box containing the letter **C**. Measure 19 is marked with a box containing the letter **C**. Measure 20 is marked with a box containing the letter **C**. Measure 21 is marked with a box containing the letter **C**. Measure 22 is marked with a box containing the letter **C**. Measure 23 is marked with a box containing the letter **C**.

System 4 (Measures 24-31): Measure 24 is marked with a box containing the letter **D**. Measure 25 is marked with a box containing the letter **D**. Measure 26 is marked with a box containing the letter **D**. Measure 27 is marked with a box containing the letter **D**. Measure 28 is marked with a box containing the letter **D**. Measure 29 is marked with a box containing the letter **D**. Measure 30 is marked with a box containing the letter **D**. Measure 31 is marked with a box containing the letter **D**.

System 5 (Measures 32-39): Measure 32 is marked with a box containing the letter **E**. Measure 33 is marked with a box containing the letter **E**. Measure 34 is marked with a box containing the letter **E**. Measure 35 is marked with a box containing the letter **E**. Measure 36 is marked with a box containing the letter **E**. Measure 37 is marked with a box containing the letter **E**. Measure 38 is marked with a box containing the letter **E**. Measure 39 is marked with a box containing the letter **E**.

System 6 (Measures 40-47): Measure 40 is marked with a box containing the letter **F**. Measure 41 is marked with a box containing the letter **F**. Measure 42 is marked with a box containing the letter **F**. Measure 43 is marked with a box containing the letter **F**. Measure 44 is marked with a box containing the letter **F**. Measure 45 is marked with a box containing the letter **F**. Measure 46 is marked with a box containing the letter **F**. Measure 47 is marked with a box containing the letter **F**.

56



G Light



74



84

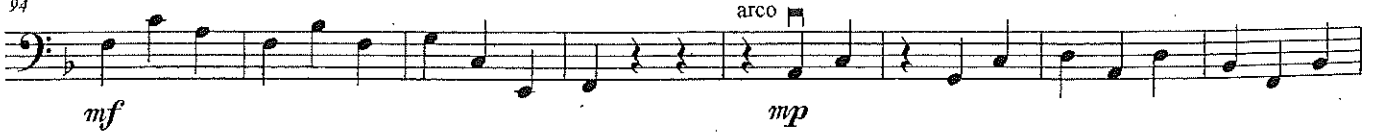
I



94

J

агсо



102

K



110

L



Huapango del Oso - Double Bass - 2

M

118



N

126



O

134



P

142



Q

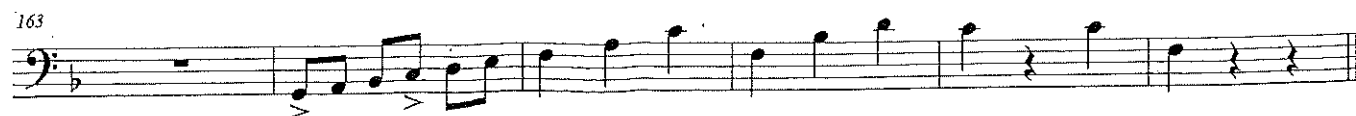
149



156



163



Huapango del Oso - Double Bass - 3